



The Excel Society is a social service society serving adult clients with a broad range of disabilities in Edmonton and Calgary. It has been supporting clients since 1964.

EXCEL'S VISION:

“Enriching Lives by enabling potential”

The Excel Society has over 400 employees working with people who need accommodation and support to improve their lives. The staff are trained to help clients enhance daily skills such as meal preparation and communication, along with ongoing educational opportunities. They also work with families to ensure their loved ones are comfortable, safe and secure.

Excel offers a wide range of living options from independent living with supports to personal care homes and “Enhanced Designated Assisted Living” facilities.

The main focus is on what creates a good fit for the individual and their capabilities.

At Excel, staff listen to the clients’ dreams and try their best to deliver support and guidance to assist in fulfilling those dreams.



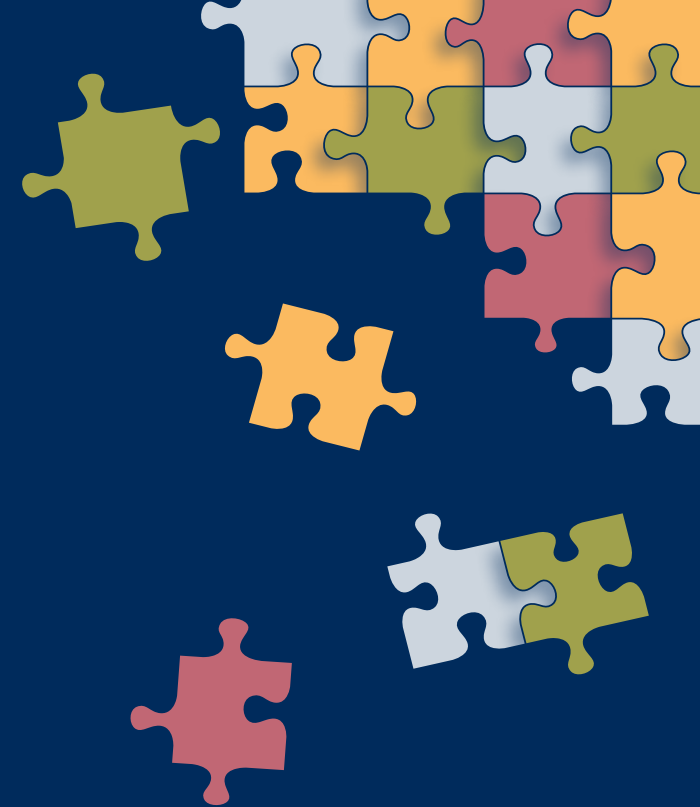
Excel Society recognizes that this can be a difficult time for families!

Please feel free to contact us with any of your questions. We want to help get the answers you need!

**You can call Rachelle or Charlie
at 780-455-2601 from 8:15 am to
4:30 pm on weekdays!**



*We are here to help solve your
family's Care Puzzle with you!*



BALWIN VILLA

*A Family Solution to the
Care Puzzle of Alzheimers,
Dementia & Parkinsons*



BALWIN VILLA

Balwin Villa has been especially designed to meet the needs of family members with early onset dementia or brain injury.

It is located within an established Edmonton community (6920 - 129 Avenue, Edmonton, Alberta) and is surrounded by a mature neighbourhood. The site includes a theatre/ gymnasium that will be shared with the community.

Balwin Villa contains 105 barrier free units, in which 80 are for clients referred by the Alberta Health Services and 25 are private pay suites. There is an active waiting list for these 25 units, in which 19 are in the Rocky View Building and 6 are in the Wheatland Building.

Rocky View suites can be individual bachelor suites, one bedroom suites, or couple suites with a common sitting area

Private pay suites will accept any stage of dementia.

BUILDING CONFIGURATION

Bachelor – Wheatland
Bachelor – Rocky View
1 Bedroom – Rocky View
2 Bedroom - Rocky View



SERVICE/FEATURES INCLUDED IN THE ROOM AND BOARD PRICE

Available Health Care Services

- 24 hour Nurse Presence

Available Supportive Services

- Assisted bathing
- 24 Hour Supervision
- Medication Administration
- Special diets accommodated
- 3 Daily Meals included
- Snacks available

External Supportive Services Arranged

- Coordinated Outings (Some extra charges)
- Social/recreational program
- Visiting Pet Program
- Weekly Housekeeping

Amenities and Features

- 24 Hour Security
- Secured unit
- Basic Cable
- Private Dining Room
- Utilities included
- Wheelchair accessible throughout
- Common kitchen/Servery
- Horticultural Area
- Guest parking
- Non-denominational Chapel
- Lounges
- Kitchenette in one and two bedroom suites
- Spa Room
- Nurse Call/Wander Guard
- Fire/Smoke alarms and Sprinkler system
- Fitness/gymnasium
- Games Room/Tuck Shop
- Public Phone Available
- Individual room temperature control
- Individual Storage Lockers
- Operable Windows



SERVICE/FEATURES INCLUDED AT AN ADDITIONAL COST

- Enhanced Cable
- 2 bedroom Guest Suite
- Telephone Service
- Internet Service
- Resident Parking
- Hair Salon/Barber
- Daily Housekeeping
- Personal Laundry
- Assistance with Aids to Daily Living
- Incontinence Supplies
- Oxygen
- Personal Nursing Care
- Rehabilitative Care
- Vitals Monitoring
- Assistance with feeding
- Tray service to Suite/Room

